

Photo 1
History of Photography

Name _____
Due Date _____
You earned _____ out of 25 possible points.

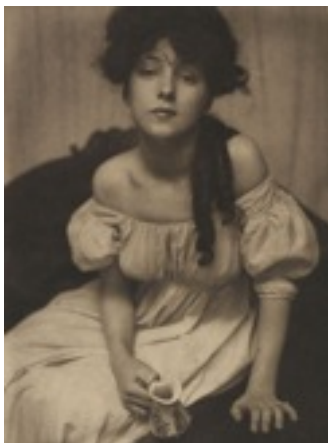
Worksheet 8
Using Biography and Psychoanalysis as Methods

Read "Games of the Doll" on the assignments page and answer the following questions.

Considering the photographer's biography, why did Hans Bellmer construct intricate dolls and photograph them?

What characterizes surrealist photographs? How does the psychoanalytic theories developed by Sigmund Freud at the turn of the century relate to surrealist art?

Why are Bellmer's photographs often described as surrealist? In other words, what surrealist characteristics do the images utilize?



Gertrude Kasebier. Portrait of Miss N. c. 1902.



Hannah Hoch. Dada Dance. 1922.



Hans Bellmer. La Poupée. 1935 - 1938.

