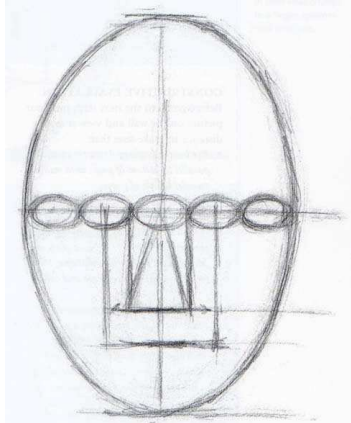


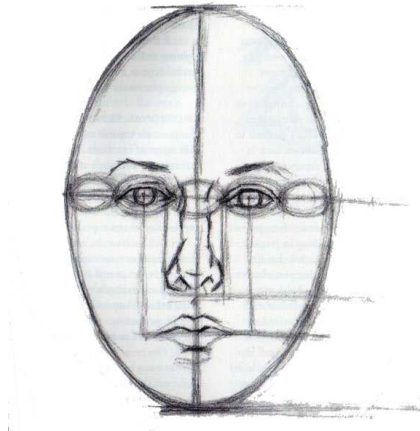
Theme #5
Portraiture

The challenge in drawing portraits is to accept what is actually seen instead of resorting to well known symbols. Blocking is a method that establishes a solid structure to your drawing of a face. Once a face is properly blocked, the artist must open themselves to truly seeing their subject, paying close attention to the specifics and peculiarities of the individual's face. Another major concern for contemporary artists is to bring new life to a very common, very traditional subject.

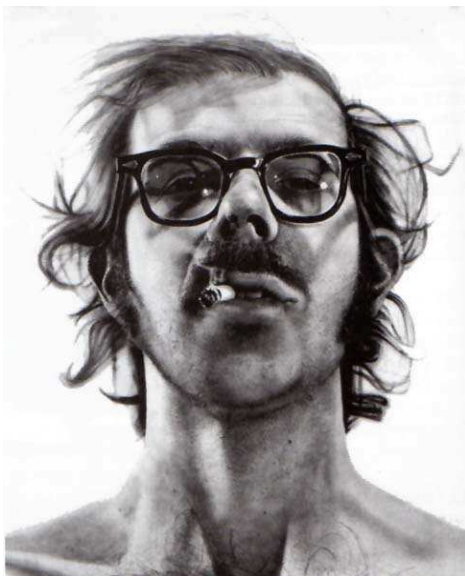
Project	Instructions	Supplies
Blocking a face		
	Demonstrate how to block a general face	Drawing paper
		Pencils or crayons
Eyes, nose, lips & ears		
	Use a hand held mirror to analyze the separate features of your own face	18 X 24 drawing paper
	Execute studies of your eyes, nose, lips and ears	Charcoal, colored pencil or conte crayon
	Include front facing and profile views	
Live model		
	Pair up with another student	18 X 24 drawing paper
	One student will serve as a model, while the other student draws their likeness for 20 minutes	Charcoal, pencil, or conte crayon
	Repeat, reversing roles	
Final Portrait		
	Draw a likeness of someone else using a photo	Dark drawing paper (i.e. brown, blue, black)
	Remember, your photo is only your source – you may change it in whatever way you consider necessary	White charcoal, charcoal, conte crayon or colored pencil
	Think about adding interest to the image by portraying your individual with a dramatic expression or with a spectacular drawing technique	



Core proportions of the human head



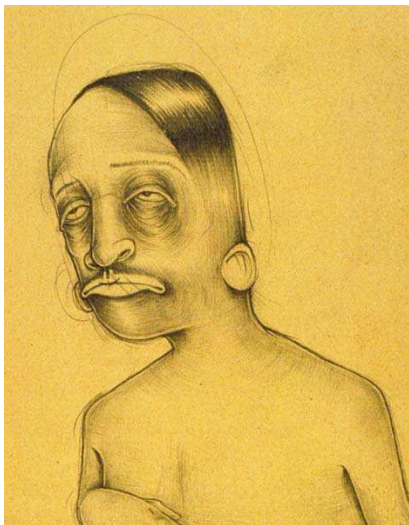
Blocked face



Chuck Close. Big Self-Portrait. 1968.



Takashi Murakami. Study for SMP Ko2. 1999.



Barry McGee. Untitled. 1998 – 2002.



John Currin. The Clairvoyant. 2001.