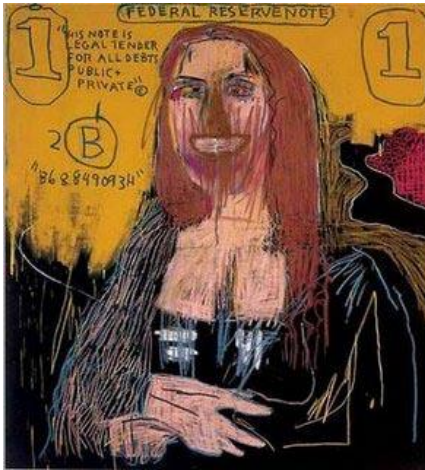


## What's my grade so far?



Jean Michel Basquiat. Mona Lisa. 1986.

Use this table to keep a running score of the points you have earned in this class. At any point in the semester you can compute your grade by dividing the number of points you have earned by the number of points possible at that time, which will give you a percentage (points earned  $\div$  points possible = %).

Look your percentage up on the second page of this syllabus to determine your general grade.

Assignment		Points Earned	Points Possible
Class Projects	What is art?		40 points
	Compare and contrast essay		40 points
	Hands On activity or Class Presentation		80 points
	Exhibition Review or Research Paper		80 points
Midterm			60 points
Final Exam			80 points
Participation			20 points
Extra Credit			
<b>Total</b>			400 points