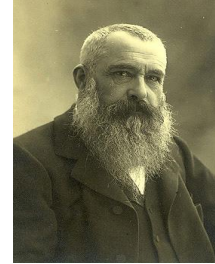


# Claude Monet Water Lilies

1920

Monet focused on lighting to provide diffused contours and an assorted

Considered to be one of the most highly influential Impressionist artists



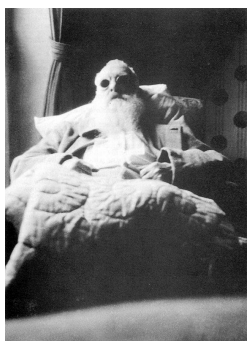
“The illusion of an endless whole, of water without horizon or bank”



Monet painted several different versions of a similar motif to show the expansiveness of light, and its effect at several different perspectives

Many of Monet's works of art were done with very small brush stroke using oil paint on canvas as an enhancement of detail

Monet's Water Lily paintings were done on his own property in Giverny, France



During the early 1920's, Monet developed intense Cataracts in his right eye, which also eventually affected his left eye. During this time he lost some of his usual details in his motifs as well as including distorted colors

He enjoyed painting controlled nature such as his own gardens and ponds of water lilies that were landscaped